

Mystic User Manual

Microwave System Calculator User Manual

© **2006-2012 M. Tosti**

All rights reserved.

Products that are referred to in this document may be either trademarks and/or registered trademarks of the respective owners. The publisher and the author make no claim to these trademarks.

While every precaution has been taken in the preparation of this document, the publisher and the author assume no responsibility for errors or omissions, or for damages resulting from the use of information contained in this document or from the use of programs and source code that may accompany it. In no event shall the publisher and the author be liable for any loss of profit or any other commercial damage caused or alleged to have been caused directly or indirectly by this document.

Table of Contents

1 Getting Started.....	4
• 1.1 Overview.....	4
• 1.2 Getting started with Mystic.....	4
• 1.3 Getting started with input data files.....	6
• 1.4 Getting started with output result analysis.....	7
• 1.5 Getting started with stage characterization.....	9
1.5.1 Amplifier.....	9
1.5.2 Attenuator.....	9
1.5.3 Filter.....	9
1.5.4 Loss.....	10
1.5.5 Mixer.....	10
2 Menu commands.....	11
• 2.1 File Menu.....	11
2.1.1 New.....	11
2.1.2 Open.....	11
2.1.3 Save.....	11
2.1.4 Quit.....	11
• 2.2 EditInput Menu.....	11
2.2.1 Edit Cell.....	11
2.2.2 Insert Row.....	11
2.2.3 Delete Row.....	11
2.2.4 Select All.....	11
2.2.5 Select Row.....	11
2.2.6 Select Column.....	12
2.2.7 Deselect All.....	12
2.2.8 Cut to clipboard.....	12
2.2.9 Copy to clipboard.....	12
2.2.10 Paste from clipboard.....	12
2.2.11 Delete.....	12
• 2.3 EditOutput Menu.....	12
2.3.1 Select All.....	12
2.3.2 Deselect All.....	12
2.3.3 Copy to clipboard.....	12
• 2.4 OpenS2P Menu.....	13
2.4.1 OpenS2Pfile.....	13
• 2.5 RUN Menu.....	13
2.5.1 Run Mystic.....	13
• 2.6 Options Menu.....	13
2.6.1 Input editable.....	13
2.6.2 Enable graphical output.....	13
2.6.3 Enable working point check.....	13
• 2.7 Help Menu.....	13
2.7.1 About Mystic.....	13
3 Quick How-to.....	14

- 3.1 How to input a data file..... 14
- 3.2 How to deal with compression and saturation points..... 16
- 3.3 How to deal with S2P files..... 17
- 3.4 How to save output..... 17
 - 3.4.1 Save output tables..... 17
 - 3.4.2 Export output pictures..... 17
- 3.5 How to print..... 17
- 4 Mystic versions and license details..... 18**
 - 4.1 Mystic CL (Command Line version)..... 18
 - 4.2 Mystic Lite..... 18
 - 4.3 Mystic Pro..... 18
 - 4.4 Disclaimer of Warranty..... 19
- 5 Technical support..... 20**
 - 5.1 Bug reporting..... 20
 - 5.2 Updating to Mystic PRO..... 20
 - 5.3 Contact Information..... 20

Illustration Index

Figure 1: Mystic main window.....	5
Figure 2: Mystic output displayed by dPlot.....	6
Figure 3: NF resulting from data.txt example PCB stage at 5 dB gain.....	8
Figure 4: NF resulting from data.txt example PCB stage at 8 dB gain.....	9
Figure 5: Amplifier in Mystic.....	15
Figure 6: Mystic compression and saturation modeling [dBm both axis].....	16
Figure 7: Mystic working point check on active components.....	17

Index of Tables

Table 1: Generic datasheet electrical specifications.....	14
Table 2: Typical performance datasheet electrical measurements.....	15

1 Getting Started

1.1 Overview

Microwave System Calculator is an easy-to-use program which provides you with a smart way to build your RF/electronic designs faster and easier.

Microwave System Calculator is a system level tool; this means you can project your system using Microwave System Calculator but you can not design devices or characterize electromagnetic structures.

If you start your design and make big efforts to get a reliable simulation but later on you find out that there is something puzzling your project, how do you proceed?

You start up it again from the beginning!

This can't happen if you use Microwave System Calculator because it gives you the way to know if something at system level is wrong during a very early stage.

Finally some explanation about the Mystic short name, it derives from the contraction of "**M**icrowave **sYSTem** **C**alculator".

1.2 Getting started with Mystic

Mystic work environment consists of 2 windows:

- The left window holds the input and output data tables.
On the higher part of the window (red box in Figure 1) you can edit the input file which describes the component chain constituting your system. In this file you can define every component you want to use filling in the required system parameters (for more details please refer to par. 1.3).
On the lower part of the window the following outputs are calculated:
 - 1-output analysis results both at component stage (blue box) and system level (green box)
 - 2-error messages (status bar)
- The right window is the graphical representation of the main system parameters (see Figure 2). Graphical output is provided by the use of the software *dPlot jr* and is very effective to allow to check which component is particularly critical for your application.
After analysis you can decide to close this window and to get new graphs or to leave it opened so you can check performance changes resulting from your latest ones in the input data file (for more details please refer to par. 1.4).

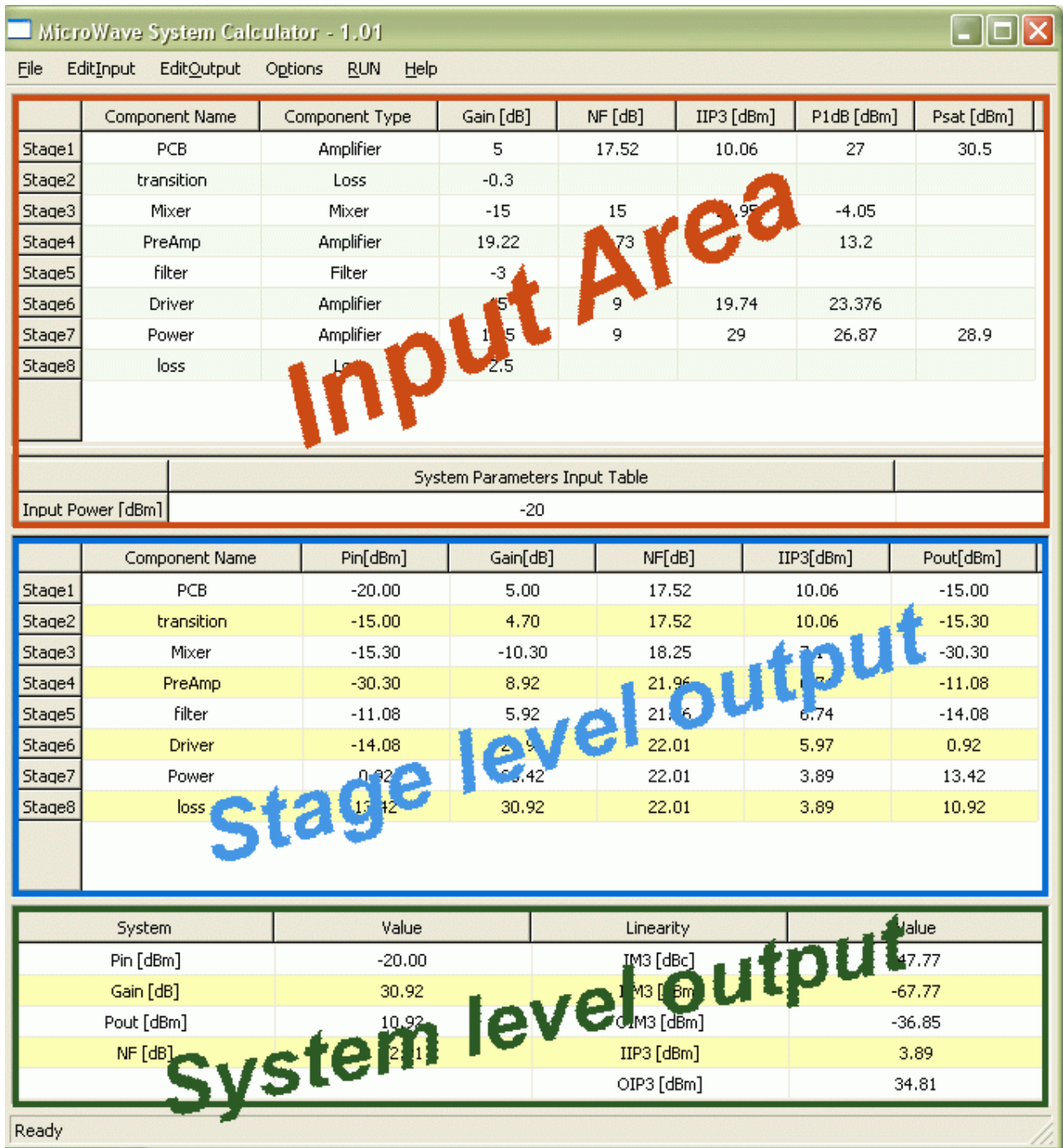


Figure 1: Mystic main window

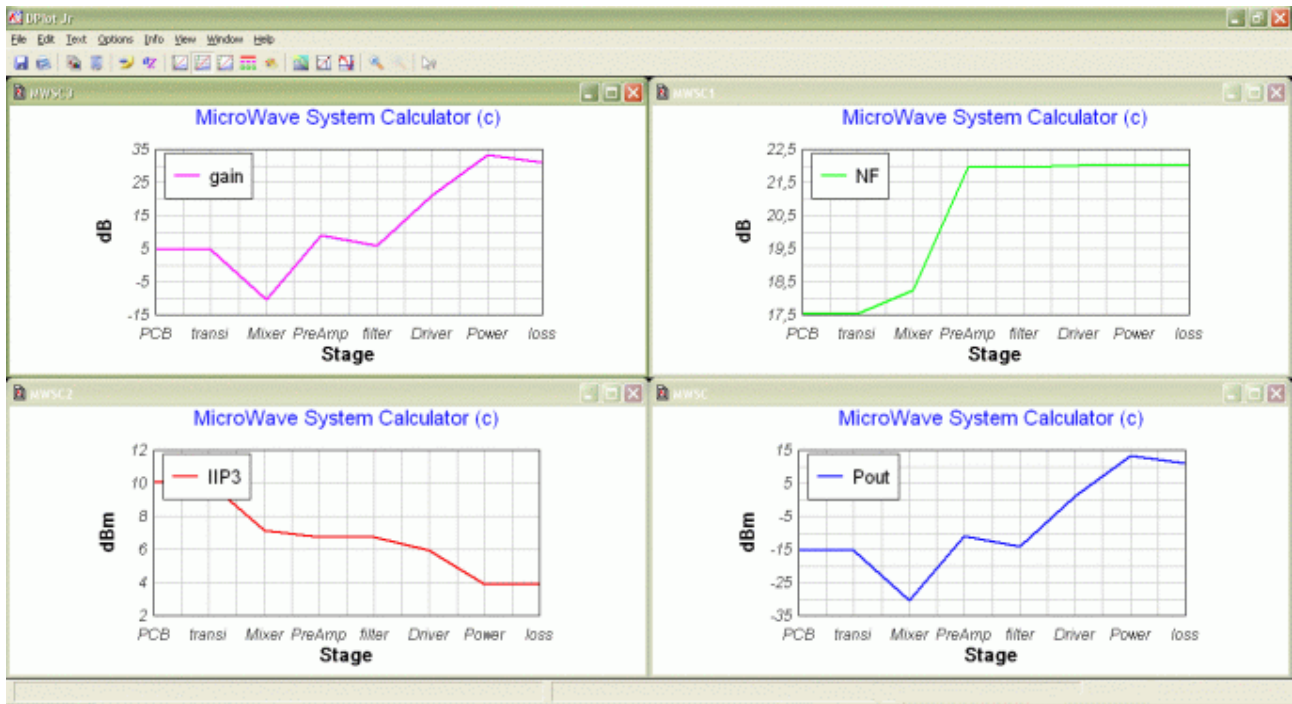


Figure 2: Mystic output displayed by dPlot

1.3 Getting started with input data files

Working with data file in Mystic is similar to work with a spreadsheet but the design is guided and supervised by Mystic itself: no mess with row deletion or insertion as always happens when editing a spreadsheet file.

Components/stages are described row by row by the declaration of their electrical performance.

In particular, each row of the data input panel describes a stage of your line-up and the following parameters are to be defined in order to characterize your component:

- Component name: put here the name of the component/subsystem
Please don't use the same name twice.
- Component type: double click this cell to have access to a menu from which you can choose the component type you want to add among the following:
 - Amplifier
 - Attenuator
 - Filter
 - Loss
 - Mixer

You can use any type of devices by using one of the previous main types, for example a whole *PCB* could be defined as an “amplifier” or a “mixer” (if a frequency conversion happens) and the *free space loss* as a generic “loss”

- Gain: put here the gain value of the component keeping attention to use the value at the interested frequency¹

¹ Analysis are made at single frequency, i.e. you just have to define the component's parameters at the frequency you are interested to; have a look at component data sheet for help. Use of s2p files as data input for component/stage

- Noise Figure: put here the NF value of the related component keeping attention to use the value at the interested frequency
- IIP3: put here the IIP3 value of the related component keeping attention to use the value at the interested frequency
- P1dB: put here the P1dB value of the related component
- Psat: put here the Psat value of the related component

Of course Mystic editor allows you to define your components or subsystems in a very driven way asking you only those parameters required for the component type you're just inserting.

In the installation path, and opened by default by Mystic, there is the file "data.txt". It is a good example to start from and provides you with a generic but complete transmitter design.

Data files are provided as .txt file not encoded or binary written. This is done to support the smart editing/browsing of the project by the user (for example you don't need to open Mystic only to know what's inside your data files).

Anyway YOU'RE STRONGLY SUGGESTED NOT EDITING yourdatafile.txt MANUALLY (even if it is possible paying attention to blind characters).

Please note that it's not possible to use the same component/stage name twice.

1.4 Getting started with output result analysis

Mystic output is provided in 3 different ways:

- output table at stage level (see blue box in Figure 1)
- output table at system level (see green box in Figure 1)
- output plots related to main output quantities (see Figure 2)

At stage level, components/stages are analyzed row by row and the calculation of their electrical performance is provided. In particular, each row of this data output panel (blue box) describes a stage of your line-up by the following electrical parameters:

- Pin: input power to the current component/stage. This is especially useful to check when component's linearity must be guaranteed
- Gain: cumulative gain up to the current component/stage
- Noise Figure: cumulative NF up to the current component/stage
- Input IP3: cumulative IIP3 up to the current component/stage
- Pout: output power of the current component/stage

At system level, the following parameters, related to the whole system, are provided:

- Pin: input power to the whole system (user input)
- Gain: whole system gain
- Pout: whole system output power
- Noise Figure: whole system NF
- IM3: whole system IM3 calculated both at the input and at the output; IM3 product relative to the power signal level (dB below carrier) is provided too

definition is under development allowing in future Mystic version analysis over frequency.

- IP3: whole system IP3 calculated both at the input and the output

At stage level by plots, electrical performance calculated at stage level are plotted. Observation of the impact of the different component/stage on the overall performance is enhanced.

TIP: if you don't close plotted graphs after a mystic execution, you can collect differences in system performance between an execution and another. For example, changing gain value of the "PCB" stage in the example file *data.txt*, you can get the results shown in Figure 3 (before change) and Figure 4 (after change) where the impact of 3 dB more gain are reflected on a better NF.

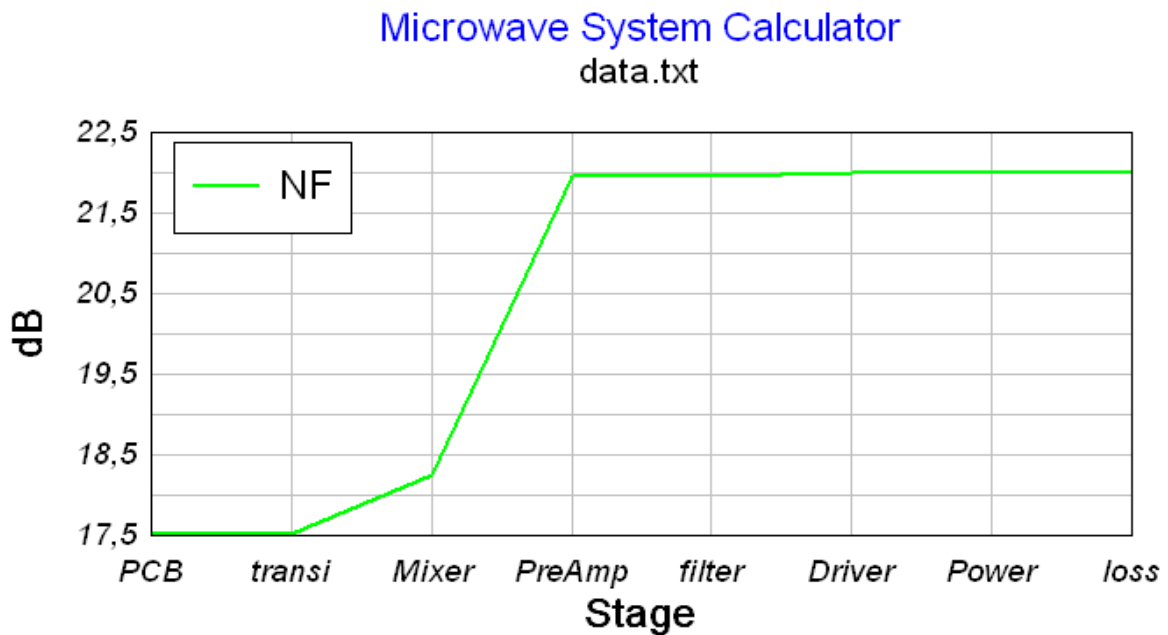


Figure 3: NF resulting from data.txt example PCB stage at 5 dB gain

Microwave System Calculator

data.txt

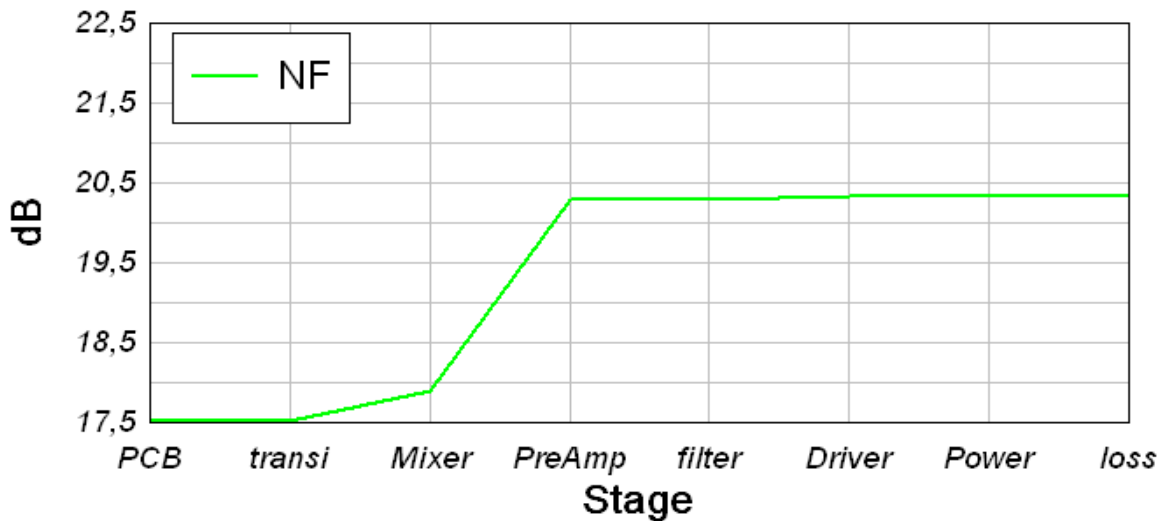


Figure 4: NF resulting from data.txt example PCB stage at 8 dB gain

1.5 Getting started with stage characterization

Components/stages are described row by row by the declaration of their electrical performance. Mystic builds its analysis starting from the component definition and it is quite important to fully understand each component characteristic. In Mystic this is quite easy to achieve because the component definition is tied just to the essential component parameters here after described. All these parameters are usually provided in the component data-sheet; see also paragraph 3.1 for further details.

1.5.1 Amplifier

An amplifier (or any other active component with compression/saturation effect) is described in Mystic by its AM/AM curve.

Definition of the AM/AM curve is done by “Gain”, “P1db” and “P_{sat}” user definition under the assumptions as described in paragraph 3.2.

Definition of the non linear performance is done by “IIP3” user definition.

Definition of the noise performance is done by “NF” user definition.

Future developments include the introduction of system frequency response with the possibility of using s-parameter files as input.

1.5.2 Attenuator

An attenuator (or any other passive matched component) is described in Mystic by “Gain” user definition. Of course gain for passive components means a negative value.

“Attenuator” differs from generic “Loss” component for its intrinsic matching capability. Please note that Mystic does not consider yet un-matching effects.

1.5.3 Filter

Filters are described in Mystic just by “Gain” user definition. Of course gain for passive components implies a negative value.

Future Mystic development includes introduction of system frequency response with the possibility of using s-parameter files or filter definitions in terms of type (chebyshev, butterworth, etc.), order and frequency.

1.5.4 Loss

A loss component (or any other passive not matched component) is described in Mystic by “Gain” user definition. Of course gain for passive components means a negative value.

1.5.5 Mixer

As for amplifiers, mixers are described in Mystic by “Gain”, “P1db” and “Psat” but this time referring to the conversion gain.

Definition of the non linear performance is done by “IIP3” user definition.

Definition of the noise performance is done by “NF” user definition.

Future developments include the introduction of system frequency response with the possibility of using s-parameter files.

Please note that mixer component in mystic is an *image rejecting mixer*; “not image rejecting” mixers are an upcoming feature.

2 Menu commands

2.1 File Menu

2.1.1 New

Generates a new clean input/output table

Shortcut: CTRL+N

2.1.2 Open...

Prompts for browsing for input data file

Shortcut: CTRL+O

2.1.3 Save...

Saves input data to a file

Shortcut: CTRL+S

2.1.4 Quit

Quits mystic.

If unsaved data are detected a window prompt will ask the user for saving.

Shortcut: CTRL+Q

2.2 EditInput Menu

This menu has effect only on the input table.

2.2.1 Edit Cell

Edits selected cell value

Shortcut: F2 or double click

2.2.2 Insert Row

Inserts a new row before the selected cell

Shortcut: -

2.2.3 Delete Row

Deletes selected cell row

Shortcut: -

2.2.4 Select All

Selects the whole input table (for example in order to copy it on a .txt file)

Shortcut: CTRL+A (at least one cell must be selected)

2.2.5 Select Row

Selects the row of the selected cell

Shortcut: -

2.2.6 Select Column

Selects the column of the selected cell

Shortcut: -

2.2.7 Deselect All

Deselects any selection active in the input table

Shortcut: -

2.2.8 Cut to clipboard

Cuts the current selection to clipboard

Shortcut: CTRL+X (at least one cell must be selected)

2.2.9 Copy to clipboard

Copies the current selection to clipboard

Shortcut: CTRL+C (at least one cell must be selected)

2.2.10 Paste from clipboard

Pastes clipboard content into current selection

Shortcut: CTRL+V (at least one cell must be selected)

2.2.11 Delete

Deletes current selection

Shortcut: -

2.3 EditOutput Menu

This menu has effect only on the output tables.

In particular the upper part of the menu affects the stage level table and the lower part the system level table.

2.3.1 Select All

Selects the whole output table (for example in order to copy it on a .txt file)

Shortcut: CTRL+A (at least one cell must be selected)

2.3.2 Deselect All

Deselects any selection in the input table

Shortcut: -

2.3.3 Copy to clipboard

Copies the current selection to clipboard

Shortcut: CTRL+C (please note that if both tables are selected the stage level one will be copied)

2.4 OpenS2P Menu

2.4.1 OpenS2Pfile

Prompts for browsing for input S2P data file

Shortcut: -

2.5 RUN Menu

2.5.1 Run Mystic

Executes Mystic.

Calculation is presented in the output tables and graphs are made.

Shortcut: CTRL+R

2.6 Options Menu

Current available configuration options are the following:

2.6.1 Input editable

Enable/disable input table editing.

This is useful to protect input data files by incidental typos.

Shortcut: -

2.6.2 Enable graphical output

Enables/disables graphical output.

This is useful when you want to make quick changes to the data file and check specific output parameters without having the graphical system overview to be generated.

Shortcut: -

2.6.3 Enable working point check

Enables/disables graphical active component working point check.

This is useful to check in which condition active components are working. In particular, you can check if the working point is in linear, compression or saturation region.

Shortcut: -

2.7 Help Menu

2.7.1 About Mystic

Shows version information and Mystic loaded version (Lite/Pro).

It shows licensing information for Pro registered users.

Shortcut: -

3 Quick How-to

3.1 How to input a data file

Input a data file is quite easy in Mystic. It is just a matter to find the right information in the component's data-sheets.

Let's see an example.

Let's suppose we would like to use in our design the Minicircuit GALI5+ (a surface mount monolithic amplifier).

Moreover let's suppose we want our circuit working in the frequency band:

$$f_{\text{band}} = 2.3\text{-}2.7 \text{ GHz}$$

First we collect the data we need to characterize the component in Mystic.

So, download the GALI5+ data-sheet from the Minicircuit web site and verify the following information (we just extracted them from there taking 2.5 GHz as reference frequency whenever applicable):

Parameters	Value [~2.5 GHz]
Gain [dB]	16.75
Noise Figure [dB]	3.5
IIP3 [dB]	15.6
P1dB [dBm]	18
Psat [dBm]	29 (extrapolated by max ratings)

Table 1: Generic datasheet electrical specifications

In order to input this component in a data file, follow the next steps:

1. Run Mystic by clicking the start menu link
2. Click on "File->New"
3. Under "Component Name" column, double click on "Component 1" and type the component's name "Gali5+"
4. Under "Component Type" column, double click on "Double click me" and select the component's type, in this case "Amplifier". Several fields become editable.
5. Fill in all the numbers in Table 1 in the corresponding Mystic cells by double clicking each cell

Let's add also a 3 dB loss, follow the next steps:

6. Fill in row 2 by adding 3 dB loss (for example)
7. Fill in "input power" cell, -20 dB (for example)
8. Check that your inputs is similar to Figure 5
9. Click on the "Run" menu button and see the results of the Mystic analysis

Component Name	Component Type	Gain [dB]	NF [dB]	IIP3 [dBm]	P1dB [dBm]	Psat [dBm]	
Stage1	Gali5+	Amplifier	16.75	3.5	15.6	18	29
Stage2	Loss	Loss	-3				
Stage3	Component3	Double click me					
Stage4	Component4	Double click me					
Stage5	Component5	Double click me					
Stage6	Component6	Double click me					
Stage8	Component8	Double click me					

Input System Parameters	Input Power [dBm]
	-20

Figure 5: Amplifier in Mystic

Let's suppose the just done analysis made by Mystic is promising and we want to make our analysis more precise; in this case we have to provide Mystic with more precise values. We have 2 choices:

1. measure the parameters we need on component samples
2. collect the data we need asking to the component producer

In case of GALI5+, Minicircuit has already done this for us, just download the GALI5+ "Typical Performance Data" pdf file. From that we got data to characterize the component in Mystic, we do that at 3 frequencies, 2.3 GHz, 2.5 GHz, 2.7 GHz (Vd=4.45 V).

Parameters	Value (2.3/2.5/2.7 [GHz])
Gain [dB]	17.85 / 17.48 / 17.12
Noise Figure [dB]	3.71 / 3.72 / 3.75
IIP3 [dB]	10.88 / 10.57 / 10.28
P1dB [dBm]	15.65 / 15.13 / 14.36
Psat [dBm]	29 (extrapolated by max ratings)

Table 2: Typical performance datasheet electrical measurements

As you can see comparing Table 1 and Table 2, a significant difference is possible: choose electrical values carefully.

From Table 2 is possible to build 3 different data files to be analyzed by Mystic and specialize analysis at the center and border frequencies.

3.2 How to deal with compression and saturation points

When taking into account active components, Mystic calculates the Pin-Pout characteristic curve.

In particular, Mystic makes the following hypothesis before and after the 1dB compression point:

- pure linearity is assumed 5 dB² before the input power corresponding to P1dB
- output saturation power is fixed 5 dB² after P1dB (only when Psat is not expressly defined in Mystic active component Psat field)

Figure 6 shows an example of the Mystic modeling of an active component (see data.txt, PCB component: Gain = 5 dB, P1dB = 27 dBm, Psat = 30.5 dBm). The 1dB compression at the 1dB compression point is highlighted by the green line.

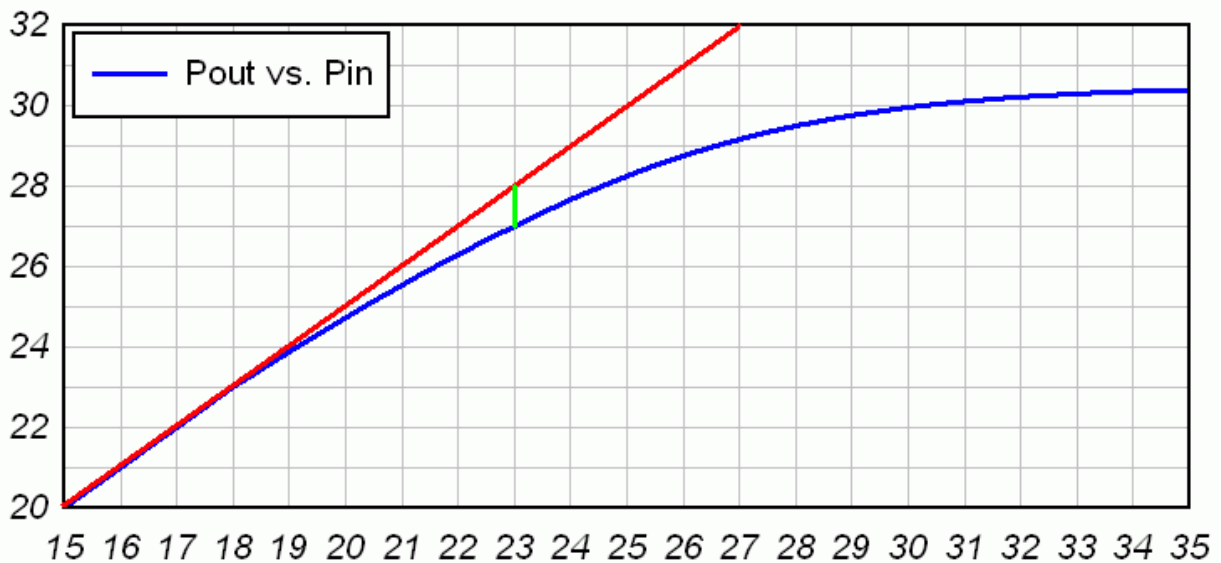


Figure 6: Mystic compression and saturation modeling [dBm both axis]

Mystic provides you with an effective way to check how your active devices are working. By executing the “working point check” with Mystic (see par. 2.6.3), you get pictures like Figure 7, one for each active component, where the working point is indicated, as well as the P1dB, over the Pin/Pout curve. The user has, this way, a perfect control on linearity behavior at component's level and consequently at system level.

² The above 5 dB assumption is widely applicable; in any case configuration of these parameters is an upcoming feature.

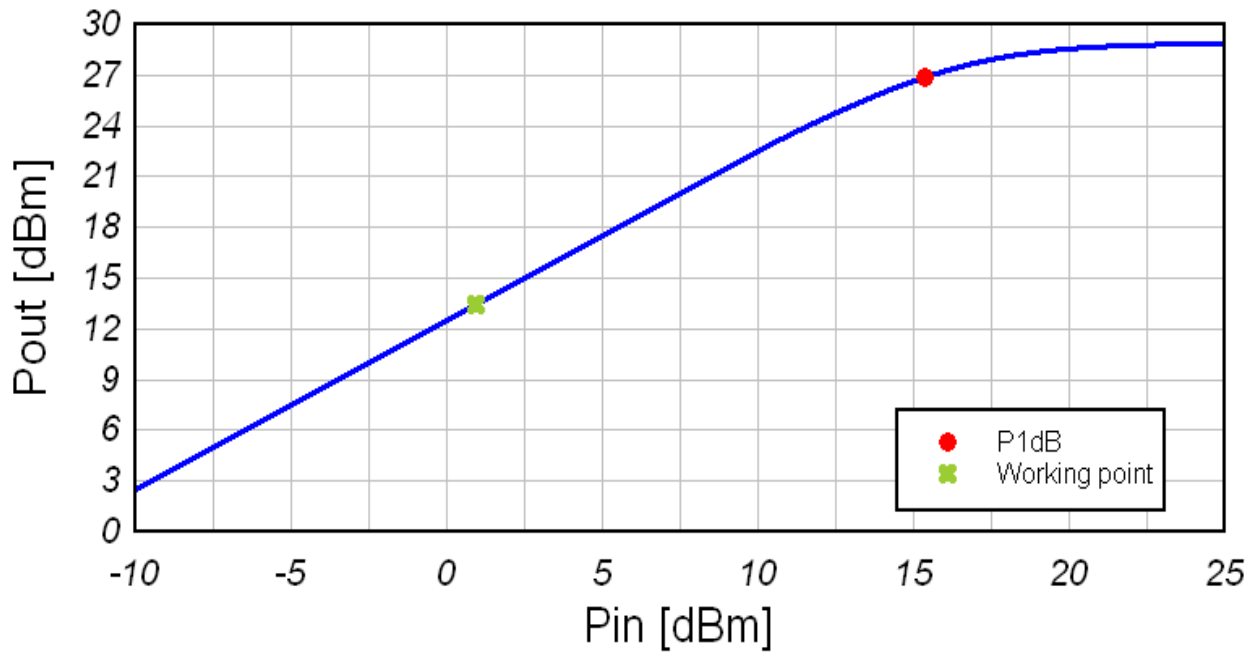


Figure 7: Mystic working point check on active components

3.3 How to deal with S2P files

To be written

3.4 How to save output

To be written

3.4.1 Save output tables

3.4.2 Export output pictures

3.5 How to print

To be written

4 Mystic versions and license details

Please read carefully the following terms and conditions before using this software. Your use of this software indicates your acceptance of this license agreement and warranty.

Microwave System Calculator CL and Lite version may be freely distributed as long as the distribution package is not modified. A copy of this Agreement must be included with each copy of Microwave System Calculator. Any distributor may not remove or alter any copyright notices contained within the Program (or archive containing the program).

No person or company may charge a fee for the distribution of Microwave System Calculator. If you are aware of any unauthorized third party distributing Microwave System Calculator and/or charging a fee for this software, please report such violations to your consumer protection authorities.

You may not rent, lease, sell the program to any third party. You may not modify, decompile, emulate, clone, disassemble or reverse engineer the program or any subset of the program.

Any such unauthorized use shall result in immediate and automatic termination of this license and may result in criminal and/or civil prosecution.

You are specifically prohibited from:

- Charging or requesting donations for any copies, however made
- Distributing the software and/or documentation in whole or in part with other products (commercial or otherwise) without prior a written permission
- Distributing or publishing registration key-file or key-generator software designed to circumvent the registration process

4.1 Mystic CL (Command Line version)

Microwave System Calculator CL is freeware, that means that this product may be used free of charge by individuals, no profit organizations, commercial organizations and government agencies for non commercial or commercial uses.

4.2 Mystic Lite

Microwave System Calculator Lite is freeware, that means that this product may be used free of charge by individuals, no profit organizations, commercial organizations and government agencies for non commercial or commercial uses.

4.3 Mystic Pro

By donating you will be sent a registration key-file which will unlock additional features and remove any software limitations.

Microwave System Calculator PRO version can not be freely distributed.

4.4 Disclaimer of Warranty

Microwave System Calculator is distributed "as is".

No warranty of any kind is expressed or implied.

The author will not be liable for data loss, damages, loss of profits or any other kind of loss while using or misusing this software: you use at your own risk.

5 Technical support

5.1 Bug reporting

Before reporting errors, please see the description of known problems and possible solutions on Mystic web site and upgrade to the latest Mystic version.

When reporting bugs, please include Mystic version number (select the About command on the Help menu).

5.2 Updating to Mystic PRO

Updates to the PRO version of Mystic are available by donating using Paypal (see link on Mystic home page). Any donation grants you free updates up to 2 years after date of donation.

Mystic PRO version is granted freely to universities and students.

5.3 Contact Information

Your comments, suggestions, and questions are always welcome.
Please send them to our e-mail address:

help@microwave-system-calculator.com

Mystic

Copyright © 2006-2012 M.Tosti

All rights reserved.