

# Frequency Mixer

Level 13 (LO Power +13dBm) 1850 to 1910 MHz

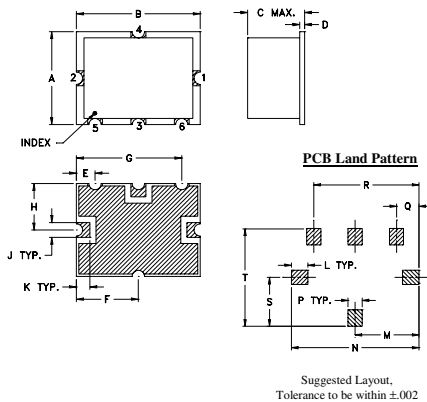
## Maximum Ratings

Operating Temperature	-20°C to 85°C
Storage Temperature	-55°C to 100°C
LO & RF Power	16 dBm

## Pin Connections

LO	2
RF	1
IF	3
GROUND	4,5,6

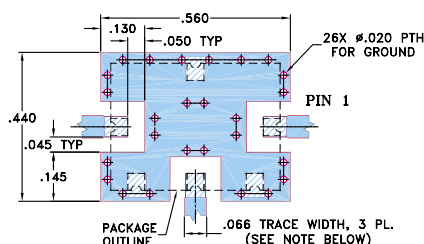
## Outline Drawing



## Outline Dimensions (inch)

A	B	C	D	E	F	G	H	J	K	L	M	N	P	Q	R	S	T	wt.
.375	.500	.23	.020	.075	.250	.425	.187	.050	.050	.070	.270	.540	.060	.095	.445	.208	.415	grams
9.53	12.70	5.84	0.51	1.91	6.35	10.80	4.75	1.27	1.27	1.78	6.86	13.72	1.52	2.41	11.30	5.28	10.54	0.8

## Demo Board MCL P/N: TB-12 Suggested PCB Layout (PL-079)



## Features

- high IP3, 30 dBm typ.
- compression, 3 dB higher than LO power

## Applications

- base stations
- communication systems
- cellular



CASE STYLE: TTT167  
PRICE: \$14.95 ea. QTY (1-9)

**+ RoHS compliant in accordance with EU Directive (2002/95/EC)**

The +Suffix identifies RoHS Compliance. See our web site for RoHS Compliance methodologies and qualifications.

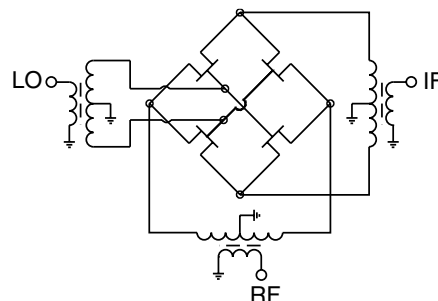
## Electrical Specifications

FREQUENCY (MHz)			CONVERSION LOSS (dB)			RF in at 1dB Compr (dBm)	IP3 (dBm)	LO-RF ISOLATION (dB)		LO-IF ISOLATION (dB)	
RF	LO	IF	Typ.	σ	Max.	Typ.	Typ.	Typ.	Min.	Typ.	Min.
1850-1910	1780-1840	70-130	7.4	0.2	8.9	+16	30	30	20	23	15

## Typical Performance Data

Frequency		Conversion Loss (dB)	Isolation L-R	Isolation L-I	VSWR RF Port	VSWR LO Port	IP3 (dBm)
RF MHz	LO MHz	LO +13dBm	LO +13dBm	LO +13dBm	LO +13dBm	LO +13dBm	LO +13dBm
1850.00	1780.00	7.40	29.76	25.59	1.82	2.25	28.61
1856.00	1786.00	7.40	30.13	25.91	1.82	2.20	29.11
1862.00	1792.00	7.42	30.13	25.93	1.81	2.12	29.29
1868.00	1798.00	7.44	29.83	25.68	1.80	2.02	28.91
1874.00	1804.00	7.43	30.22	25.74	1.80	1.94	28.54
1880.00	1810.00	7.40	29.39	25.21	1.79	1.84	28.33
1886.00	1816.00	7.39	29.10	25.27	1.78	1.78	28.46
1892.00	1822.00	7.44	29.44	25.79	1.77	1.75	29.52
1898.00	1828.00	7.46	29.30	25.70	1.77	1.75	29.16
1904.00	1834.00	7.47	28.80	25.76	1.76	1.74	30.02
1910.00	1840.00	7.47	28.78	25.35	1.75	1.70	29.14

## electrical schematic



**Mini-Circuits®**  
ISO 9001 ISO 14001 CERTIFIED

ALL NEW  
minicircuits.com

P.O. Box 350166, Brooklyn, New York 11235-0003 (718) 934-4500 Fax (718) 332-4661 For detailed performance specs & shopping online see Mini-Circuits web site



The Design Engineers Search Engine Provides ACTUAL Data Instantly From MINI-CIRCUITS At: [www.minicircuits.com](http://www.minicircuits.com)

RF/IF MICROWAVE COMPONENTS

REV. E  
M98898  
ED-8702A/3  
HJK-19MH  
DJ/TD/CP  
061228  
Page 1 of 2

# Performance Charts

## HJK-19MH+ HJK-19MH

